

RR403 Wood Chipper
RR403 Wood Chipper Belt Tightening Procedure



There are four 13MM bolts holding on the belt cover

Remove these bolts, remove the cover and set aside

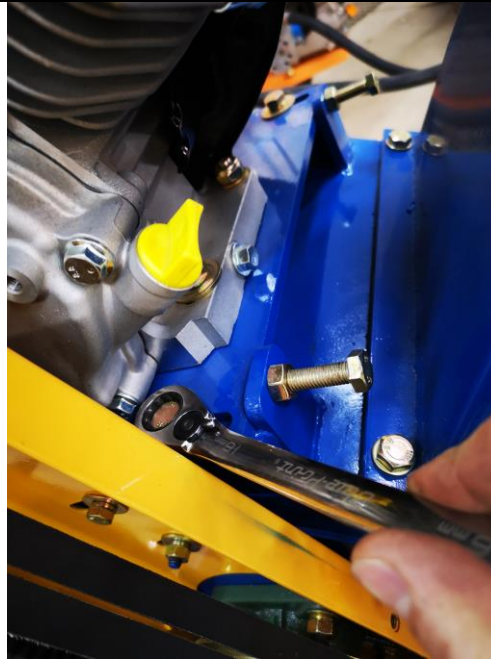


RR403 Wood Chipper

The engine mounting bolts must now be loosened but not removed

4-16MM bolts, one at each corner of the engine

Loosening these bolts allows for adjustment in the next step



Now that the engine mounting bolts are loose, we can loosen off the jam nuts on the two belt adjustment bolts

16MM wrench shown loosening one of the jam nuts off of one of the belt adjustment bolts



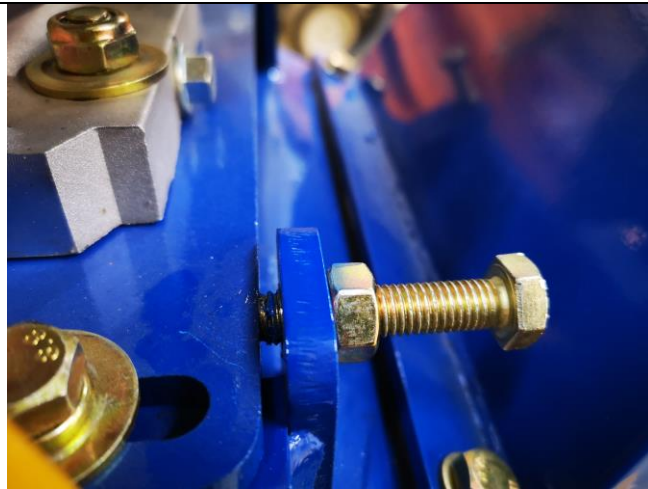
RR403 Wood Chipper

Now the belt adjustment bolts can be tightened

Tightening these bolts actually moves the whole engine away from the bottom pulley on the machine, thus increasing the distance between the two pulleys and putting more tension on the belts



After adjustment, you can see the engine plate is now pushed away from the adjustment bolt-the tension on the belt has been increased



RR403 Wood Chipper

After adjustment, your belt deflection should be less than 1" approximately

Now the adjustment bolt jam nuts can be tightened

The four engine mounting bolts can now be tightened

Re-install the belt cover with the four 13MM bolts

Start your machine and verify no belt slippage when raising the RPM and engaging drum

